

## For pictures that will outshine

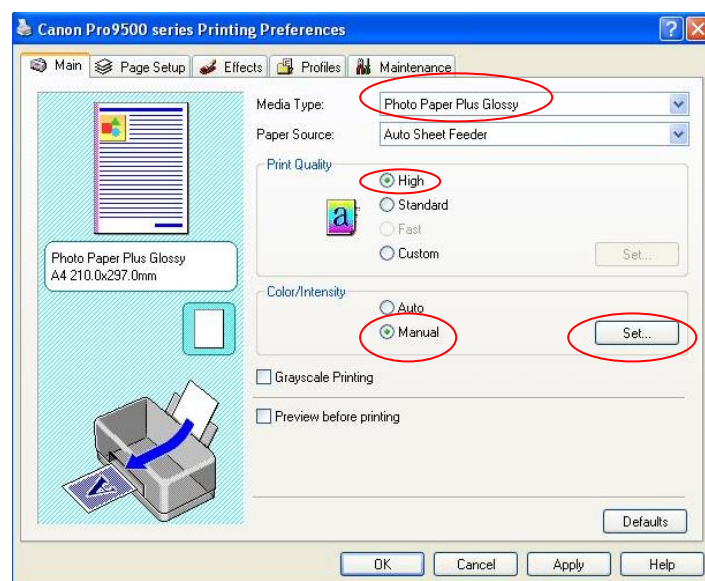
High Gloss Photo Paper (4841)  
330 g/m<sup>2</sup> high gloss

### Printer settings Canon Pixma Pro 9500

The following profile is only valid for original inks and can only be used with the following driver settings. Should you apply different settings the colour reproduction will more than likely be wrong.

Please click on *Main* and choose media settings as shown in the Screenshot below.

By *Color/Intensity* click on *Manual* followed by *Set...*



The following window will pop open, choose under *Matching* „None“.

